

# Instructions for Honey Creek Bench by Jonathan Ariail

**Materials needed for 1 bench: Wood - Pressure Treated Pine**

**2 - 2" x 8" x 12' (Backs and Seats)**

**1 - 2" x 6" x 8' (all 4 legs)**

**1 - 2" x 8" x 8' (leg support middle pieces)**

**1 - 2" x 4" x 10' (vertical and horizontal back supports)**

**Tools and materials needed:**

**Cordless Drill**

**3/16" Drill bit to pre-drill the holes**

**Driver bit for the screws**

**Wood rasp to take off the rough edges**

**Wood screws - 85 3" wood screws and 8 2½" screws**

**Tape measure**

**Chop saw or circular saw**

**Wood lengths cut -**

<b>4 - 2" x 8" treated pine boards 6' long for back and seats</b>	
<b>2 - 2" x 8" treated pine boards 18¼" long</b>	<b>4 - 2" x 6" treated pine boards 17¾" long</b>
<b>2 - 2" x 4" treated pine board 22" long</b>	<b>2 - 2" x 4" treated pine board 35½" long</b>
<b>2 - 2" x 4" x 8" triangle seat supports</b>	

**Cost of materials (wood and screws) as of June 2021 - \$112**

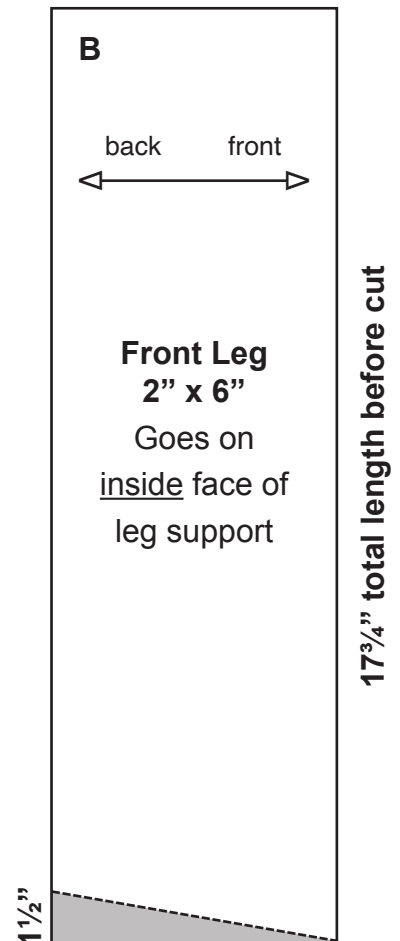
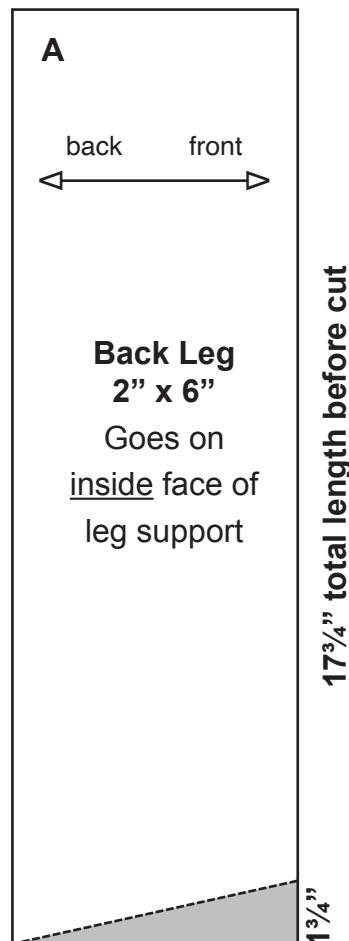
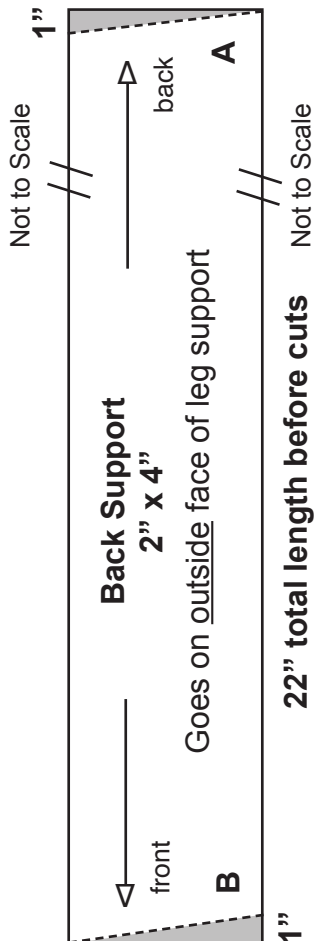
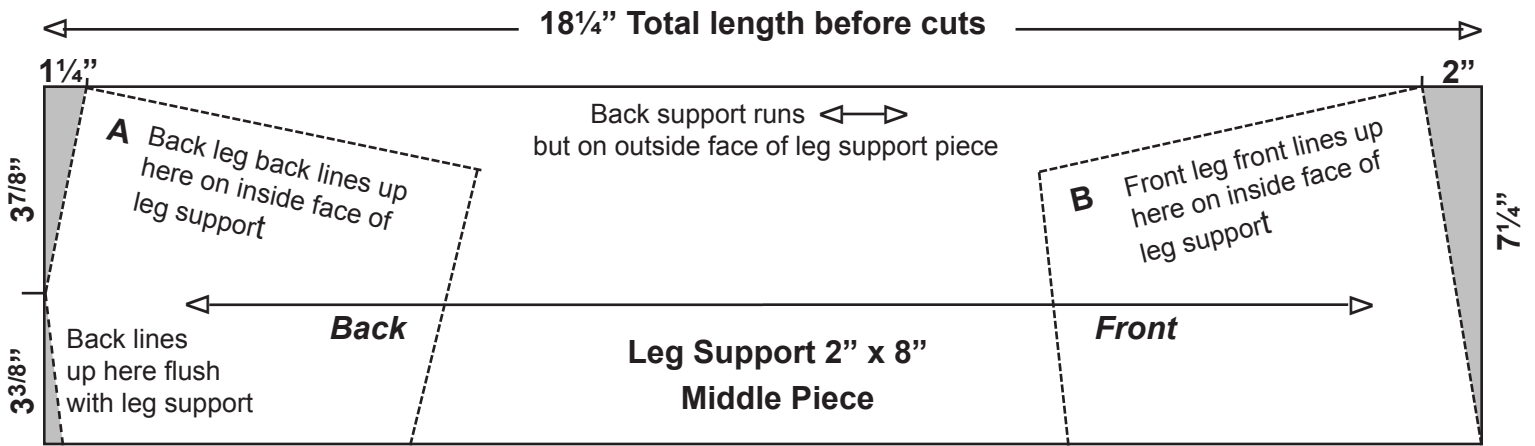


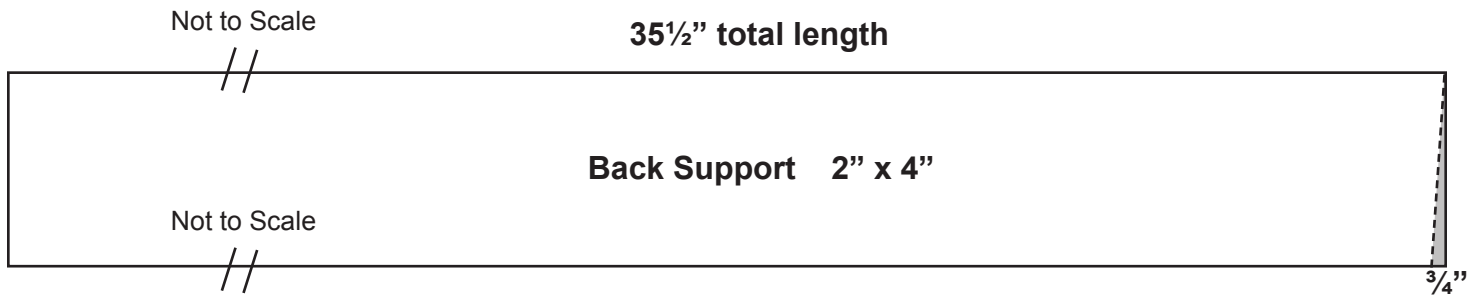
# Instructions for Honey Creek Bench

## Assembly Instructions:

Cut 2 each of the legs and support pieces. Cut 4 of the seat and back pieces. Assemble the leg and supports with 3" wood screws following the top view illustration on page 2. Attach the outside seat piece with a 2" overhang on the leg supports on the sides and front. Attach the back seat piece 1" from the back support. Attach the top back piece level with the top of the back support and the lower back piece 2 inches from the top of the back seat piece. Attach the seat support triangles to the legs and seat using the 2 1/2" screws where the triangular pieces contact the seat.

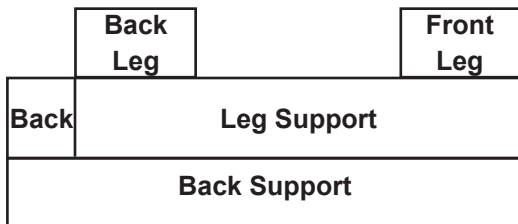
### Legs and supports - Cut 2 of each:



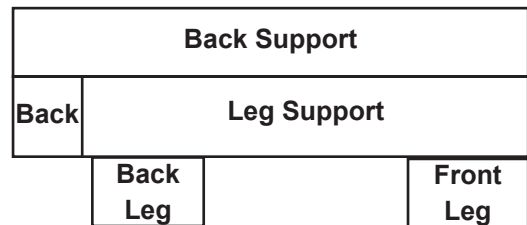


As you are seated on the bench

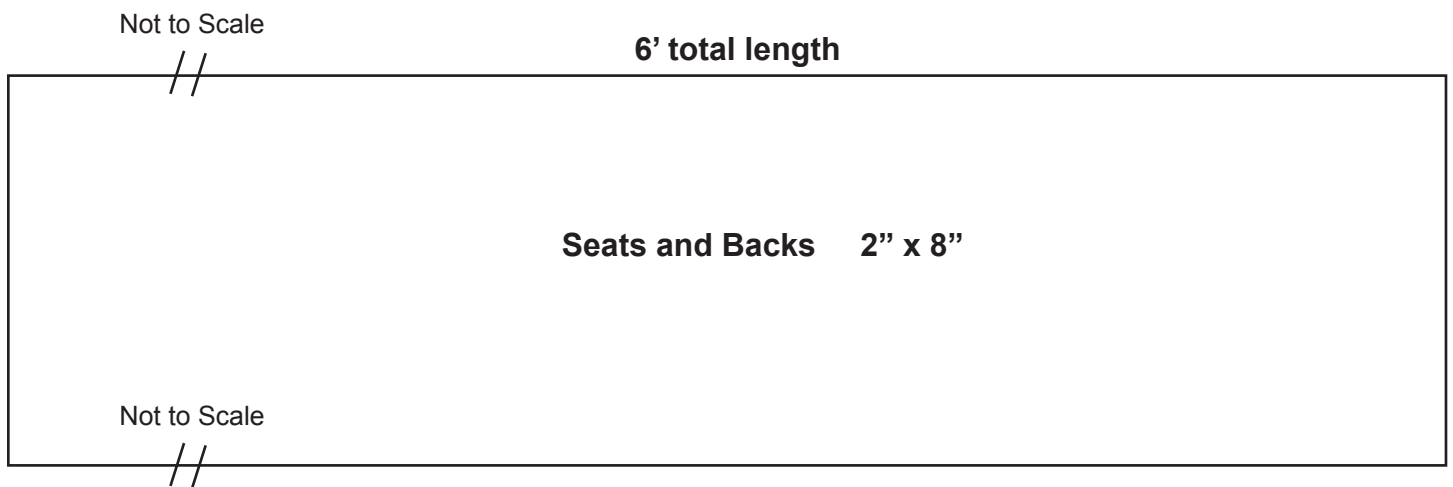
Top View Right Leg



Top View Left Leg



Seat and Back Boards: Cut 4



2" x 4" x 8" cut on 45° angle

Triangle seat supports: Cut 2

